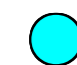
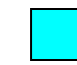


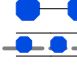










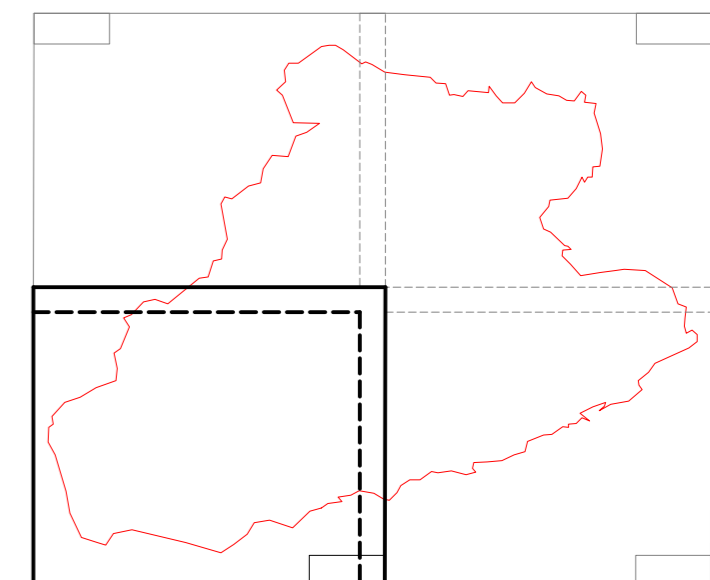
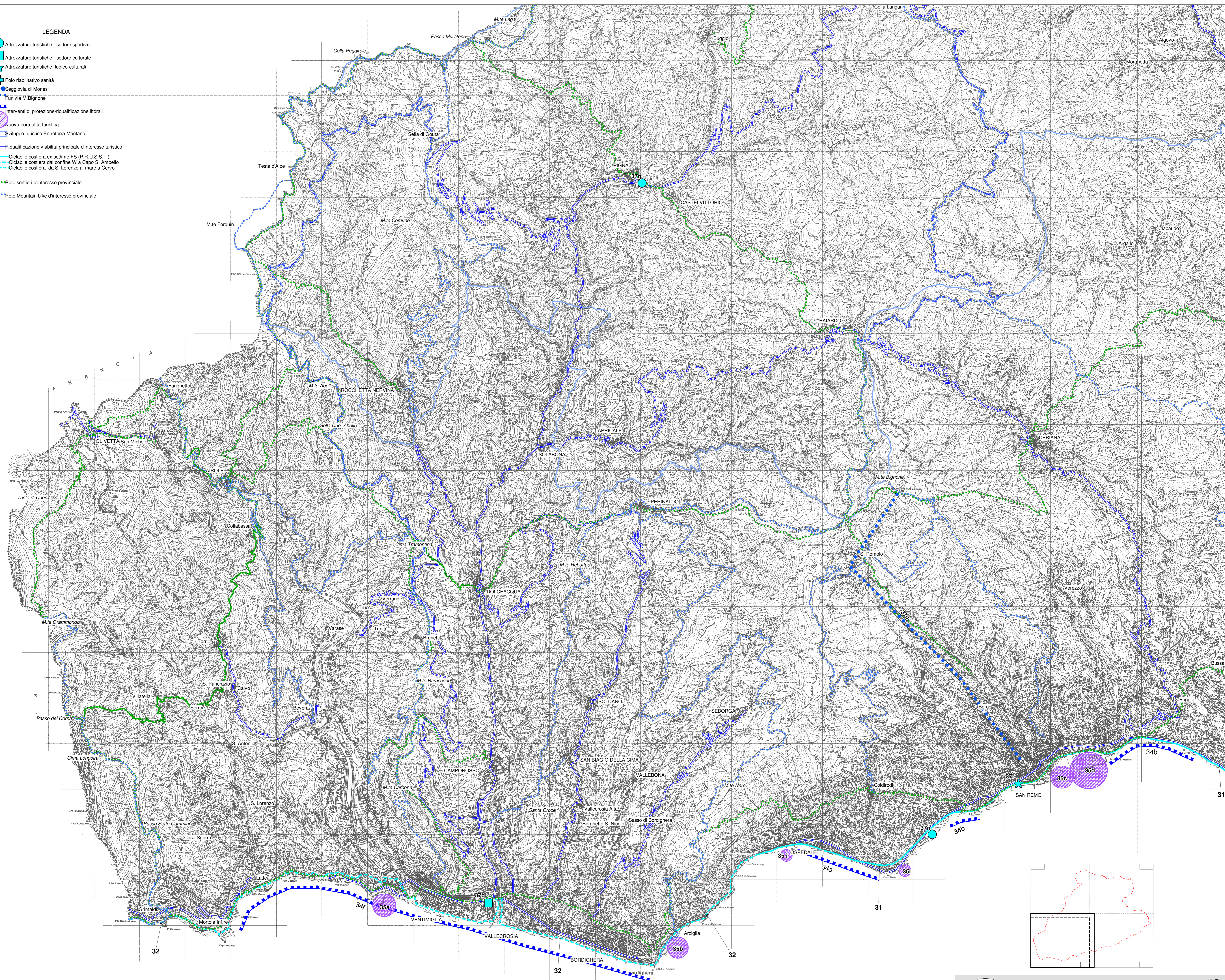


LEGENDA

-  Attrezzature turistiche - settore sportivo
-  Attrezzature turistiche - settore culturale
-  Attrezzature turistiche ludico-culturali
-  Polo riabilitativo sanità
-  Soggiornio di Monesi
-  Funivia M. Bignone
-  Interventi di protezione-riqualificazione litorali
-  Nuova portualità turistica
-  Sviluppo turistico Entroterra Montano
-  Riqualificazione viabilità principale d'interesse turistico
-  Ciclabile costiera ex sedime FS (P.R.U.S.S.T.)
-  Ciclabile costiera dal confine W a Capo S. Ampelio
-  Ciclabile costiera da S. Lorenzo al mare a Cervo
-  Rete sentieri d'interesse provinciale
-  Rete Mountain bike d'interesse provinciale



AMMINISTRAZIONE PROVINCIALE DI IMPERIA 

PIANO TERRITORIALE DI COORDINAMENTO

STRUTTURA DI PIANO

Turismo

DATA: LUGLIO 2009

TAV. N°

50 s-0

SCALA 1:50.000