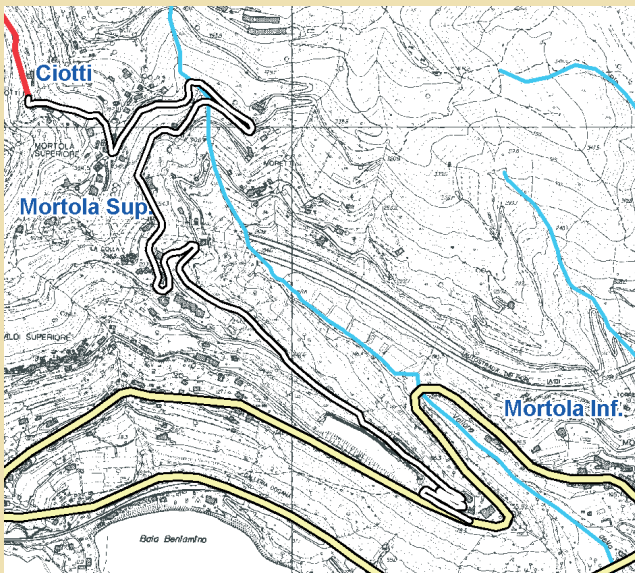


Itinerari della memoria in provincia di Imperia

JEWISH EXODUS

Path from Ciotti to Passo del Cornà



How to get there

Leave the A10 at the exit for Ventimiglia and head towards the city centre; once on the bridge over S.P. no.1 Aurelia, turn in the direction of France. After passing through the hamlets of Latte and Mortola inferiore, you come to a right-hand turn to Mortola superiore. When you reach the small piazza in the centre of the village, you will see a small road on the right descending to Borgata Ciotti and to the start of the itinerary.

Useful numbers:

Sito Internet: www.memoriadellealpi.net • www.provincia.imperia.it
Provincia di Imperia: Tel. 0183 704337 • ptc_parchi@provincia.imperia.it
IAT Ventimiglia: Tel. 0184 351183 • infoventimiglia@rivieradeifiori.org
APT Sanremo: Tel. 0184 59059 • www.rivieradeifiori.org
Riviera Trasporti Spa: info@rivieratrasporti.it • www.rivieratrasporti.it
Ferrovie dello Stato: www.trenitalia.it
Pronto Soccorso: Tel. 118
Informazioni meteo: www.meteoliguria.it



UNIONE EUROPEA



alcotra

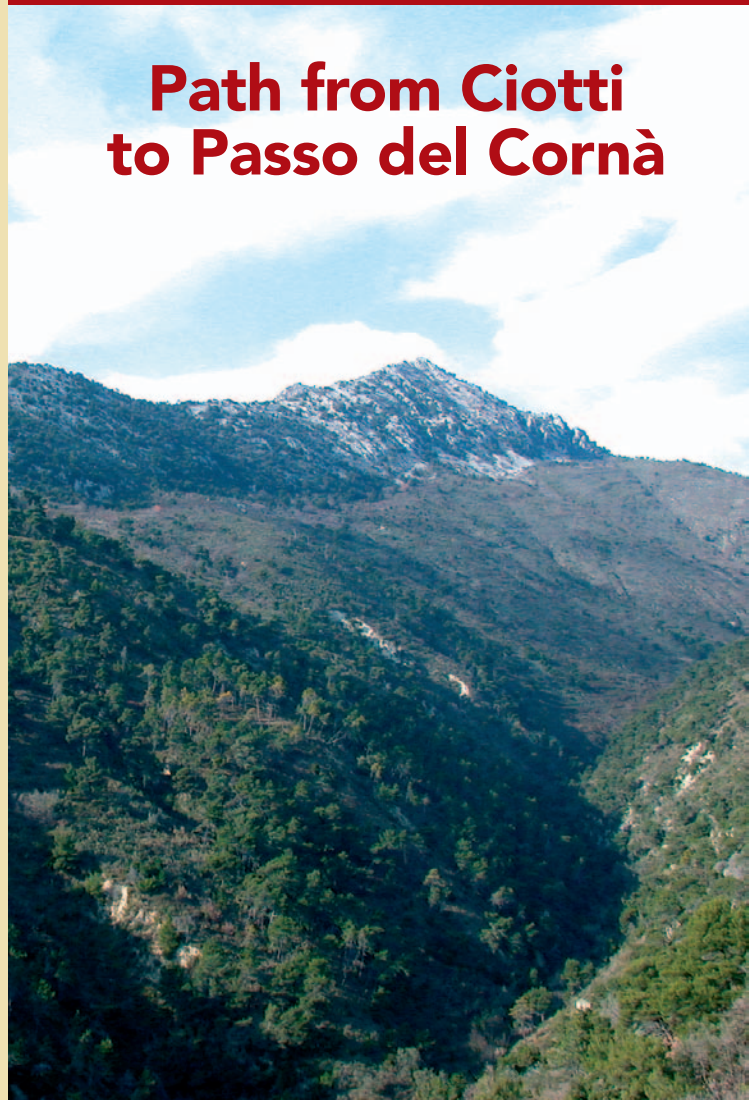


PROVINCIA DI IMPERIA

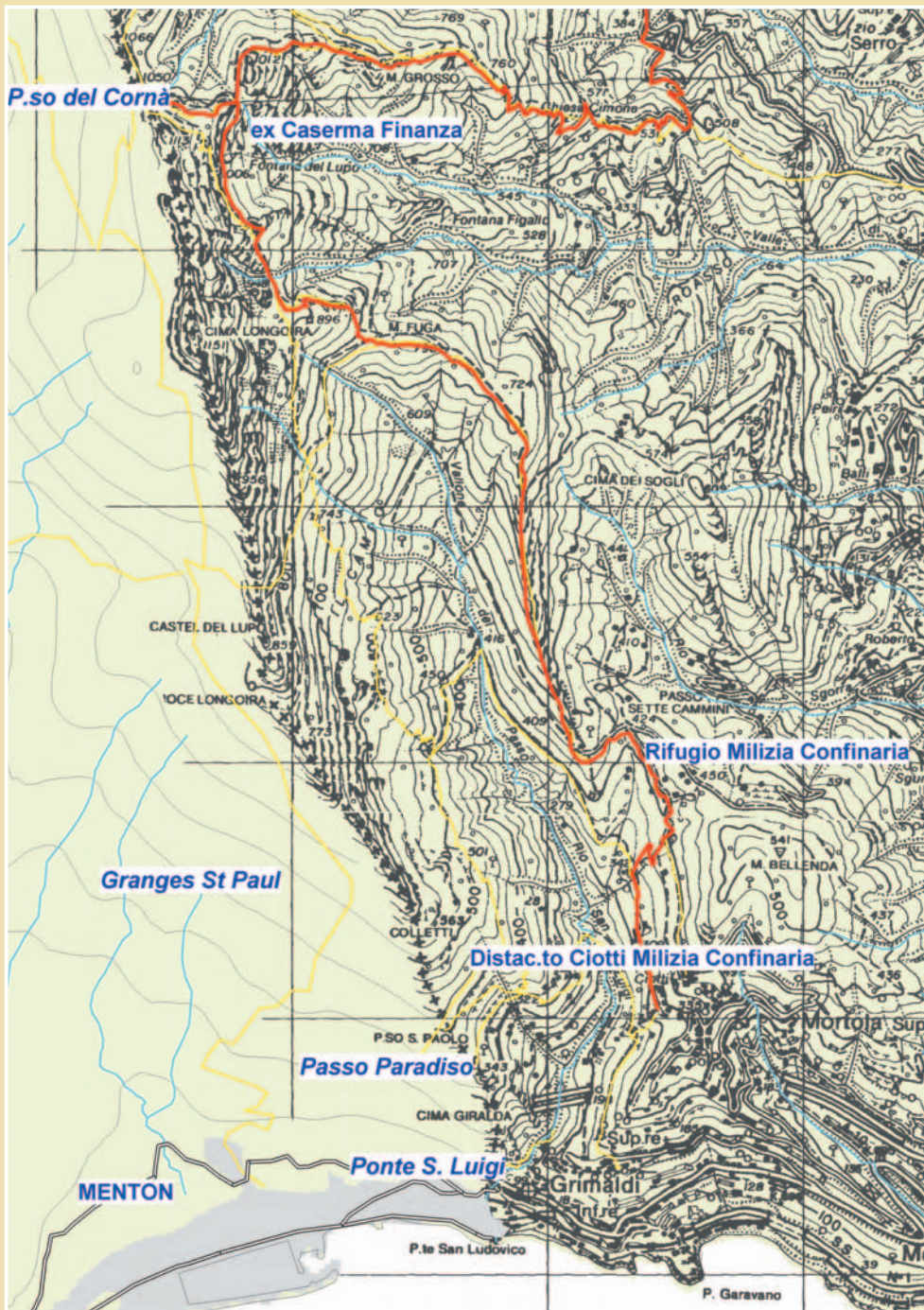
PROGETTO COFINANZIATO DALL'UNIONE EUROPEA

Foto: L. Laura - Testi: P. Veziano, S. Zanella - Cartine: S. Zanella
Stampa: Graphicolor - 2005

EIDOS Italia - 0183.29.99.33



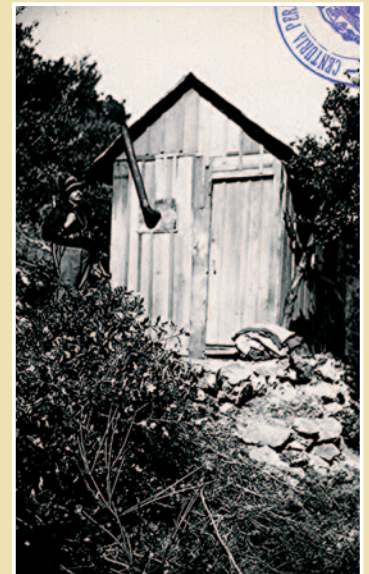
LA MEMORIA DELLE ALPI
LA MÉMOIRE DES ALPES
GEDÄCHTNIS DER ALPEN



Path from Ciotti to Passo del Cornà

The path leading from Ciotti and Villatella to Passo del Cornà was used constantly from March 1939 to May 1940 by foreign Jews forced to leave Italy after the Race laws had been passed.

The men employed as Border guards provided details on the route to be used and accompanied the Jews to the start of the path. The fixed stations used by the Border guards and Finance police along the route ensured that the border guards controlled the area and allowed all the Jews to escape without a single incident.



Rifugio della Milizia Confinaria
(Documento storico conservato presso l'Archivio di Stato IM)